

Featured Products

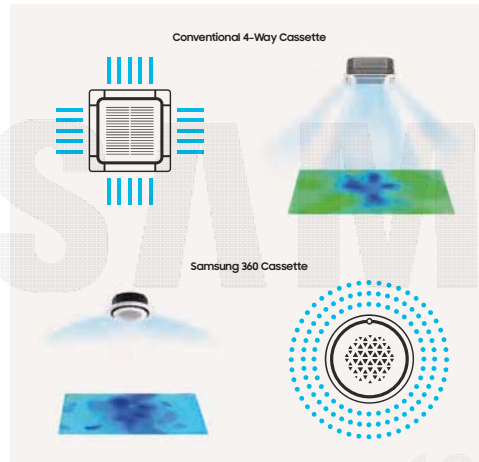


360 Cassette

Circular Airflow

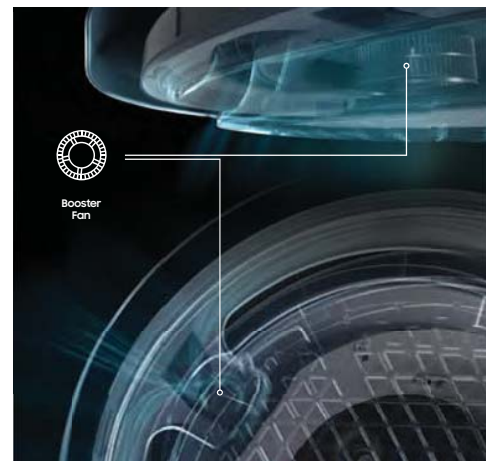
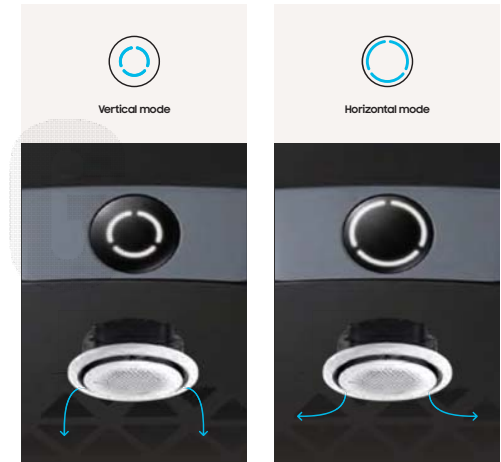
Unlike traditional 4-Way cassette units¹, which create areas of uneven airflow², the 360 Cassette ensures that cool air reaches every single corner. Its circular outlet blows cool air in every direction. The bladeless design keeps things comfortably cool without a cold draft³, and with zero blades blocking airflow, it sends 25% more air even further.

1 Samsung testing compares the 360 Cassette to a general 4-Way cassette type air conditioner
2 The temperature difference is less than 0.6°C within a 9.3m radius
3 No cold draft between 0-1.5m in height (with a 14.0kW indoor unit) within a 5m radius, no



LED Display

The unit features a stylish panel and an intuitive LED display. This allows users to choose and change the direction of airflow. Users have a choice of settings, and controlling the air in an individual zone is easy.



Airflow Control

The air supply is easily adjusted without the use of flaps. Three booster fans work to deviate the direction of airflow from within the cassette's hollow space. A rain-like distribution of the air (known as the 'coanda' effect) keeps the room cool and comfortable at all times.



Stylish Design

The 360 Cassette adds a touch of style to any room. It comes in black or white, in a square or circular design, and can be fitted within the ceiling or exposed on any material. Place it anywhere from wood, to concrete, to wallpaper or paint.

→ For Commercial (CAC) please see: Page 4.08

Specifications

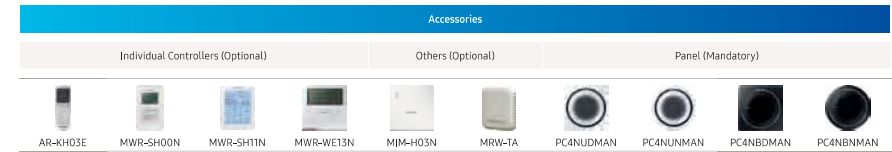


360 Cassette R32 NEW

Indoor Unit		AC071RN4PKG/EU	AC100RN4PKG/EU	AC120RN4PKG/EU	AC140RN4PKG/EU	
Outdoor Unit- Mono-Phase		AC071RXADKG/EU	AC100RXADKG/EU	AC120RXADKG/EU	AC140RXADKG/EU	
Outdoor Unit- Tri-Phase		-	AC100RXADNG/EU	AC120RXADNG/EU	AC140RXADNG/EU	
Capacity						
Cooling	Min/Nominal/Max	1.50 / 7.10 / 8.70	3.0 / 10.0 / 12.0	3.5 / 12.0 / 13.5	3.5 / 13.4 / 15.5	
	Heating up to +7°C (Min/Nominal/Max)	1.90 / 8.00 / 9.00	2.2 / 11.2 / 15.5	3.5 / 13.2 / 15.5	3.5 / 15.5 / 18.0	
	Heating @ -5°C	7.8	11.00	12.9	15.2	
	Heating @ -15°C	7.00	9.7	11.5	13.5	
Performance						
Energy Efficiency Cooling	SEER	6.7 / A++	6.8 / A++	6.0 / A+	6.4	
	Consumption	371	515	TBD	-	
	Pdesignc	71	10.0	TBD	-	
	EER	2.6	3.08	2.69	2.81	
Energy Efficiency Heating	SCOP	4.2 / A+	4.3 / A+	4.0 / A+	4.1	
	Consumption	1500	1726	TBD	-	
	Pdesignh (average)	4.5	5.3	6.5	8.4	
	COP	3.23	3.5	3.26	3.35	
AirFlow Rate	Indoor Unit (High/Mid/Low)	m3/min	51.0	72.0	72.0	110.0
Sound Power	Indoor Unit	dB(A)	53	61	61	61
	Outdoor Unit	dB(A)	65	69	70	69
Sound Pressure	Indoor Unit (Silent/Low/Mid/High)	dB(A)	29 / 33 / 36	33 / 39 / 44	35 / 40 / 45	37 / 41 / 45
	Outdoor Unit	dB(A)	49/51	52 / 54	54 / 56	53 / 54
Fan/ Outdoor unit	Type		Turbo	Turbo	Turbo	Turbo
	Power	W	65	97	97	97
	Number	EA	1	1	1	1
External Static Pressure	Min / Std / Max	Pa				
Operating Temp. Range	Cooling	°C	-15 ~ 50	-15 ~ 50	-15 ~ 50	-15 ~ 50
	Heating	°C	-20 ~ 24	-20 ~ 24	-20 ~ 24	-20 ~ 24
Electrical Data						
Power Source	Indoor Unit	V / Hz / Φ / #	220-240/ 50/1/ 2	220-240/ 50/1/ 2	220-240/ 50/1/ 2	220-240/ 50/1/ 2
	Outdoor Unit 1P	V / Hz / Φ / #	220-240/ 50/1/ 2	220-240/ 50/1/ 2	220-240/ 50/1/ 2	220-240/ 50/1/ 2
	Outdoor Unit 3P	V / Hz / Φ / #	-	380-415/ 50/ 3/ 4	380-415/ 50/ 3/ 4	380-415/ 50/ 3/ 4
Compressor Type	Outdoor Unit	Type	Twin BLDC	Twin BLDC	Twin BLDC	Twin BLDC
Power (Min/ Nominal/Max)	Cooling	kW	0.35 / 2.73 / 3.60	0.60 / 3.24 / 4.70	0.90 / 4.45 / 5.30	0.80 / 4.76 / 6.45
	Heating	kW	0.35 / 2.48 / 3.95	0.46 / 3.20 / 5.40	0.75 / 4.05 / 5.60	0.70 / 4.62 / 7.36
Current Input	Cooling (Min/Std/Max)	A	2.0 / 11.8 / 16.0	3.0 / 14.4 / 20.4	0.75 / 4.05 / 5.60	3.7 / 20.6 / 28.0
	Heating (Min/Std/Max)	A	2.0 / 10.7 / 17.0	3.0 / 14.4 / 20.4	3.7 / 17.7 / 26.0	3.7 / 20.6 / 28.0
	Cooling- Tri-Phase (Min/Std/Max)	A	-	1.5 / 5.1 / 7.1	2.1 / 6.9 / 10.0	2.1 / 7.3 / 10.5
	Heating- Tri-Phase (Min/Std/Max)	A	-	1.2 / 5.0 / 8.4	2.1 / 6.3 / 12.0	1.9 / 7.1 / 12.0
Dimensions						
Net Dimensions (W x H x D)	Indoor Unit	mm	947 x 281 x 947	947 x 365 x 947	947 x 365 x 947	947 x 365 x 947
	Outdoor Unit	mm	880 x 798 x 310	940 x 998 x 330	940 x 998 x 330	940 x 1210 x 330
Net Weight	Indoor Unit	kg	20.2	23.5	23.5	25.5
	Outdoor Unit	kg	51.0	75.0	81.0	91.5
Refrigerant						
Refrigerant	Type		R32(Contains fluorinated greenhouse gases. GWP=675)			
	Factory charging	kg	1.7 / 15m	2.7 / 30m	2.7 / 30m	2.9 / 30m
	Charging Ton equivalent CO2	tCO2e	1.15 tCO2e	1.82 tCO2e	1.82 tCO2e	1.96 tCO2e
	Additional refrigerant charging	g / m	25	50	50	50
	Liquid Pipe	Φ.inch	1 / 4	3 / 8	3 / 8	3 / 8
Piping Connections	Gas Pipe	Φ.inch	5 / 8	5 / 8	5 / 8	5 / 8
	Min/ Max	m	3 / 50	50	50	75
Piping Length	Max	m	30	30	30	30
Piping Connections	Drain pipe	Φ.mm	VP25 (OD32.ID25)	VP25 (OD32.ID25)	VP25 (OD32.ID25)	VP25 (OD32.ID25)
Others						
Panel	Model code		PC4NUNMAN	PC4NUNMAN	PC4NUNMAN	PC4NUNMAN
	Net Dimensions (W x H x D)	mm	1050 x 66 x 1050	1050 x 66 x 1050	1050 x 66 x 1050	1050 x 66 x 1050
	Net Weight	kg	2.7	2.7	2.7	2.7
Accessories	Drain pump		included	included	included	included
	Max lifting height/ displacement	mm / L/h	750/24	750/24	750/24	750/24

- 360° air supply.
- Bladeless discharge by using 3 small booster fans.
- Built-in condensation drain pump (750 mmH₂O).
- High ceiling mode for heights up to 4.6m (12.8/14 kW), 3.9m (11.2 kW), 3.5m(4.5~9kW).

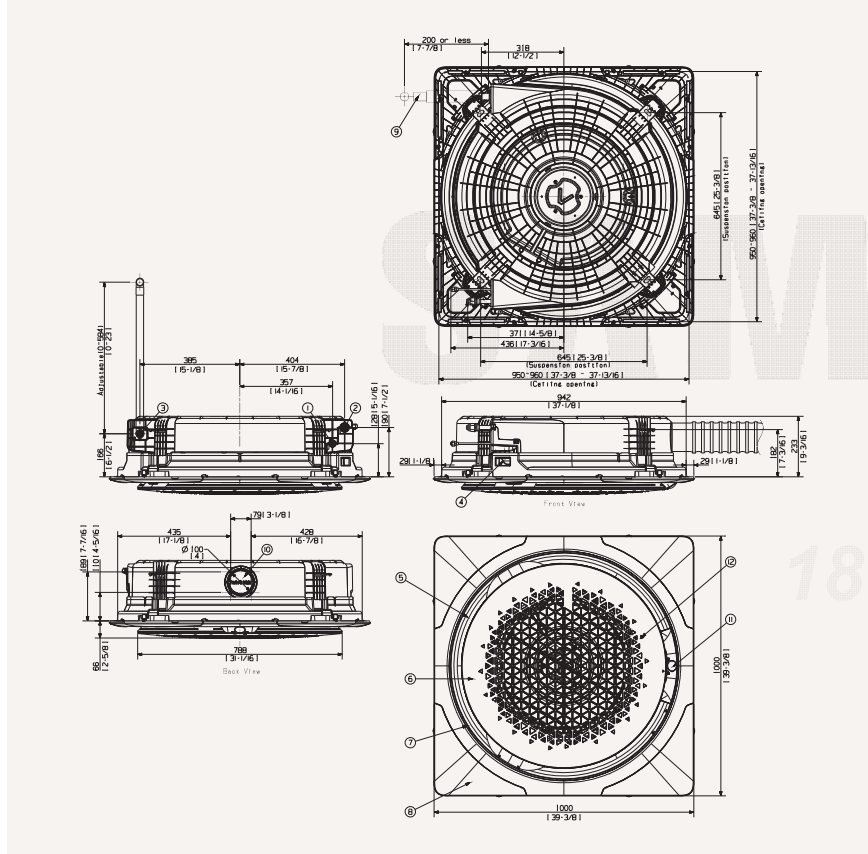
- SPI Ionizer device (optional).
- Circular or square cassette panel.



Dimensional Drawings

360 Cassette (square)

AC071*N4PK*/EU

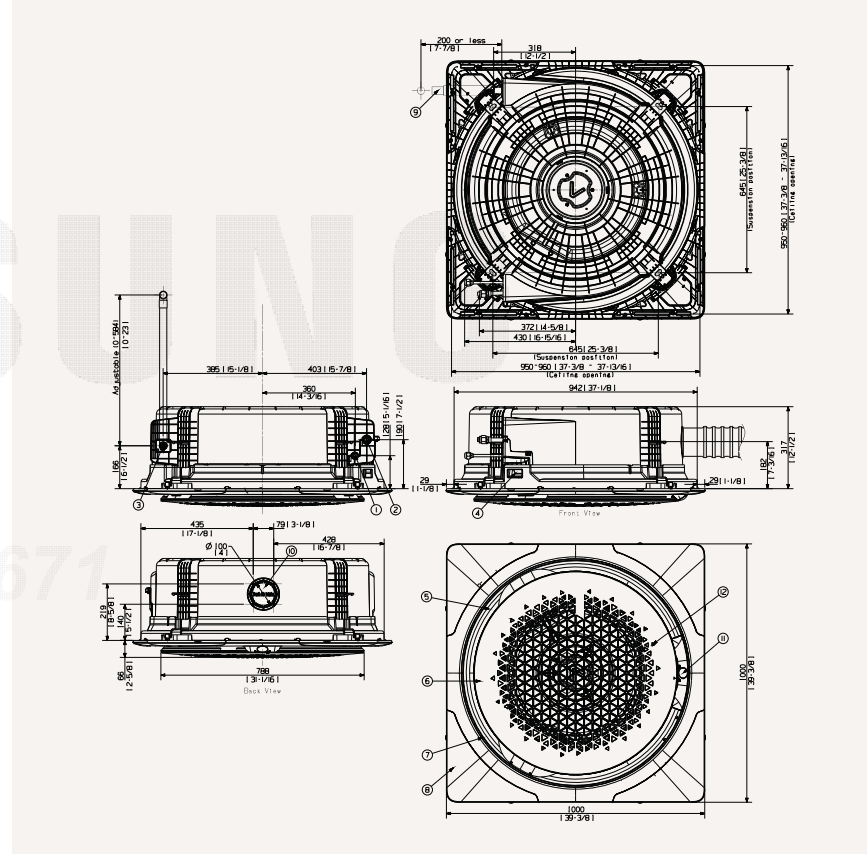


Pos.	Name	Description
1	Liquid piping	ø 6,35 mm (1/4")
2	Gas piping	ø 15,88 mm (5/8")
3	Condensation drain piping	VP-25 (OD32, ID25)
4	Power supply cables connection / communication	-
5	Air supply	-
6	Air intake	-

Pos.	Name	Description
7	Booster Fan hollow space	-
8	Panel	-
9	Condensation drain piping (accessory)	-
10	Pre-cut hole - external air	ø 100 mm
11	Display	-
12	Wireless remote controller receiver	-

360 Cassette (square)

AC070/100/120/140*N4PK*/EU



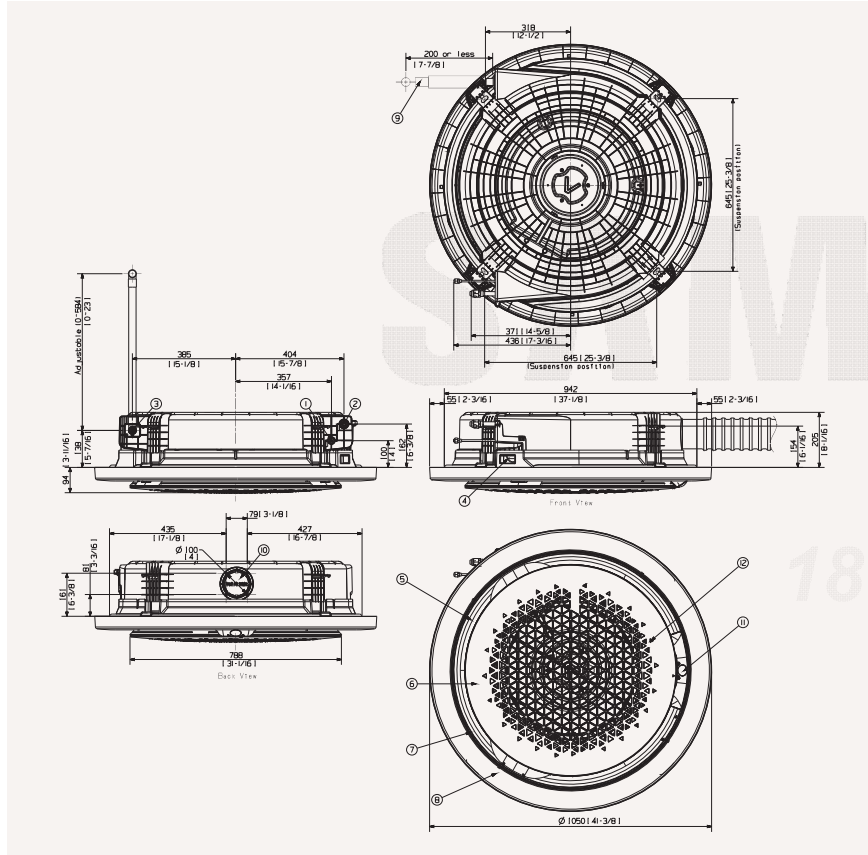
Pos.	Name	Description
1	Liquid piping	ø 9,52 mm (3/8")
2	Gas piping	ø 15,88 mm (5/8")
3	Condensation drain piping	VP-25 (OD32, ID25)
4	Power supply cables connection / communication	-
5	Air supply	-
6	Air intake	-

Pos.	Name	Description
7	Booster Fan hollow space	-
8	Panel	-
9	Condensation drain piping (accessory)	-
10	Pre-cut hole - external air	ø 100 mm
11	Display	-
12	Wireless remote controller receiver	-

Dimensional Drawings

360 Cassette (circle)

AC091*N4PK*EU

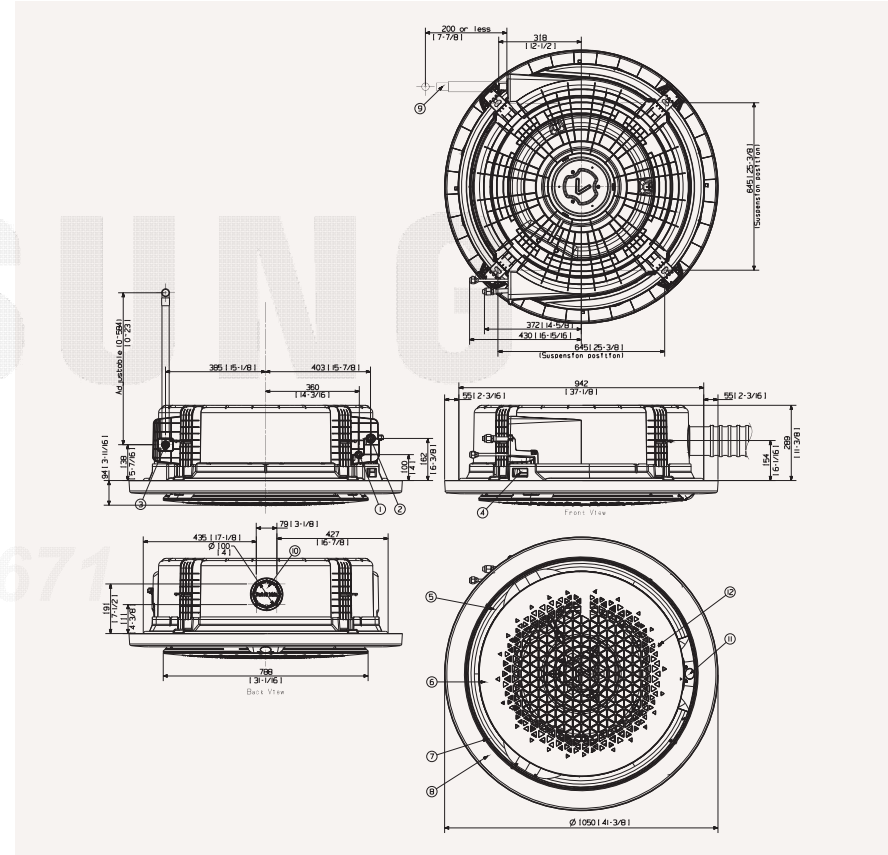


Pos.	Name	Description
1	Liquid piping	ø 6,35 mm (1/4")
2	Gas piping	ø 15,88 mm (5/8")
3	Condensation drain piping	VP-25 (OD332, ID25)
4	Power supply cables connection / communication	-
5	Air supply	-
6	Air intake	-

Pos.	Name	Description
7	Booster Fan hollow space	-
8	Panel	-
9	Condensation drain piping (accessory)	-
10	Pre-cut hole - external air	ø 100 mm
11	Display	-
12	Wireless remote controller receiver	-

360 Cassette (circle)

AC090/100/120/140*N4PK*EU



Pos.	Name	Description
1	Liquid piping	ø 9,52 mm (3/8")
2	Gas piping	ø 15,88 mm (5/8")
3	Condensation drain piping	VP-25 (OD332, ID25)
4	Power supply cables connection / communication	-
5	Air supply	-
6	Air intake	-

Pos.	Name	Description
7	Booster Fan hollow space	-
8	Panel	-
9	Condensation drain piping (accessory)	-
10	Pre-cut hole - external air	ø 100 mm
11	Display	-
12	Wireless remote controller receiver	-